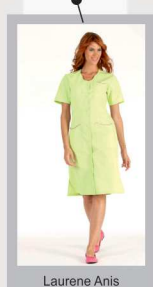


HASSON

BLOUSE FEMME MC r  f LAURENE P/C



Laurene Anis



Laurene Blanc



Laurene Parme



Laurene Gris perle

Qualit   : 65% Polyester 35% Coton 210gr/m²



Style : Encolure Fantaisie
Manches courtes
1 poche poitrine avec passepoil contrast  
2 poches basses plaqu  es avec passepoil contrast  
Fermeture centrale par 7 pressions couleurs ton sur ton
Fentes c  t  s
Longueur: 105 cm
Taille 0    6



anis/
rosa



blanc/
rosa



parme/
pomme



gris perle/
rosa



rosa/
blanc



TAILLES

	0	1	2	3	4	5	6
A	76/84	84/92	92/100	100/108	108/116	116/124	124/132
B	56/64	64/72	72/80	80/88	88/96	96/104	104/112

COLISAGE



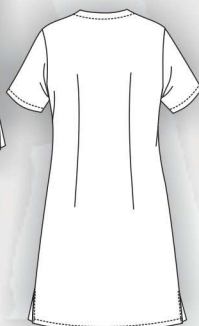
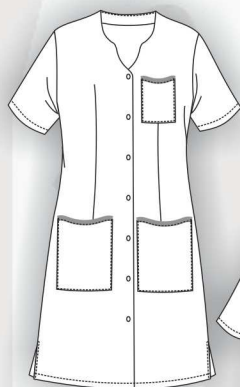
1

Sous sachet    l'unit  
Poids    la pi  ce : 0,200kg
Taille carton : 60x40x26 cm

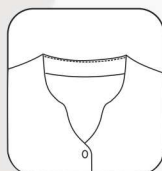
Code Entretien (lavage domestique)



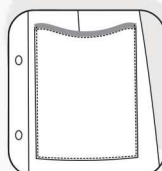
WHITE
ONLY



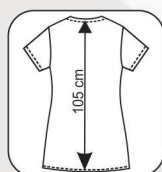
FOCUS DETAILS



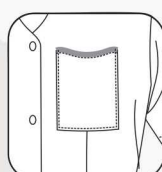
Encolure
Fantaisie



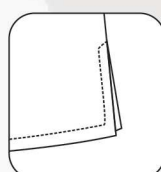
Poche basse
Fantaisie



Hauteur milieu
dos 105 cm



Poche poitrine
Fantaisie



Fentes c  t  s

